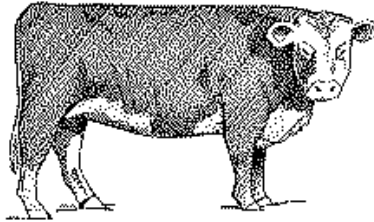


**2010
JUNIOR FAIR
MARKET BEEF
RULES AND
ENTRY FORM**



Beef Committee will assign spaces for grooming chutes

RULE CHANGES HAVE BEEN MADE FOR 2010

**MARKET BEEF SHOWMANSHIP IS
MANDATORY FOR ALL PROJECT MEMBERS!!**

**YOUR STARK COUNTY JUNIOR FAIR
ENTRY FORM IS ATTACHED**

**YOU ARE RESPONSIBLE FOR
YOUR OWN ENTRY!!**

**DEADLINE IS JULY 23rd
NO LATE ENTRIES WILL BE ACCEPTED!**

Web site:

www.starkcountyjrfair4h.com