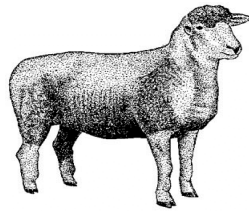


**2010  
JUNIOR FAIR  
SHEEP RULES  
ENTRY FORM**



**RULE CHANGES HAVE BEEN MADE FOR 2010**

**YOUR STARK COUNTY JUNIOR FAIR  
ENTRY FORM IS ATTACHED**

**YOU ARE RESPONSIBLE FOR  
YOUR OWN ENTRY!!**

**DEADLINE IS JULY 23RD  
NO LATE ENTRIES WILL BE ACCEPTED**

**\*EXHIBITED LAMBS MUST BE IN COMPLIANCE WITH USDA  
GUIDELINES FOR THE SCRAPIES TRACEBACK PROGRAM\***

**NO BEDDING WILL BE PROVIDED-YOU ARE  
RESPONSIBLE FOR YOUR OWN BEDDING!**

**TAG-IN DATE: JUNE 5, 2010 8:00 a.m. – 11:00 a.m.**

Web Page: [www.starkcountyjrfair4h.com](http://www.starkcountyjrfair4h.com)